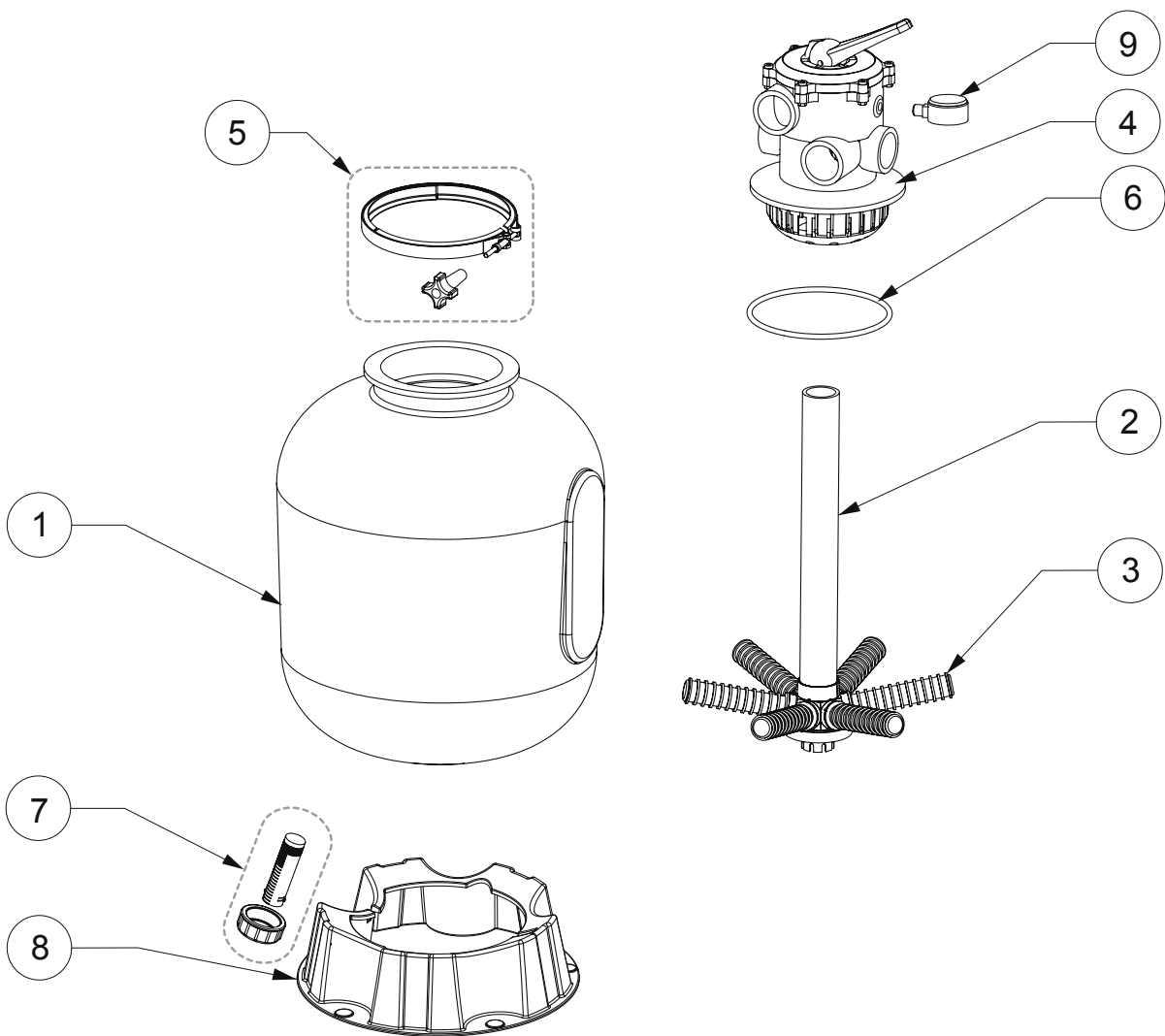


CRISTAL-FLO™ TOP MOUNT



CRISTAL-FLO™ TOP MOUNT / CRISTAL-FLO™ TOP MOUNT CLEARPRO

Replacement Parts

No.	Part No.	Description	Part No. Includes
1	R242000322	Replacement Shell Cristal-Flo TM 15"	1
	R242010322	Replacement Shell Cristal-Flo TM 17"	1
	R242030322	Replacement Shell Cristal-Flo TM 20"	1
	R242040322	Replacement Shell Cristal-Flo TM 24"	1
2	R24200MSS6	Stand Pipe Set 15" (incl. Hub)	1
	R24201MSS6	Stand Pipe Set 17" (incl. Hub)	1
	R24203MSS6	Stand Pipe Set 20" (incl. Hub)	1
	R24204MSS6	Stand Pipe Set 24" (incl. Hub)	1
	R24200MSS6CP	Stand Pipe Set 15" Clear Pro (incl. Hub)	1
	R24201MSS6CP	Stand Pipe Set 17" Clear Pro (incl. Hub)	1
	R24203MSS6CP	Stand Pipe Set 20" Clear Pro (incl. Hub)	1
	R24204MSS6CP	Stand Pipe Set 24" Clear Pro (incl. Hub)	1
	R24205MSS8	Stand Pipe Set 30" (incl. Hub)	1
	3	R301904	Lateral 15"
R302404		Lateral 17" & 20"	1*
R303004		Lateral 24" & 30"	1*
R301904CP		Lateral Clear Pro 15" & 17"	1*
R302404CP		Lateral Clear Pro 20"	1*
R303004CP		Lateral Clear Pro 24" & 30"	1*
4**	R14965TM10	Valve 1 1/2" 6-Way (15", 17", 20" & 24")	1
	R14965TM20	Valve 2" 6-Way (30")	1
5	RWC1987A	Metal Clamp Band	1
6	RU9369	O-Ring	1
7	14965-0025S	Drain Kit	1
8	RBASEUNI1	Base 15", 17", 20" & 24"	1
	R239000105A	Base 30"	1
9	R152047	Manometer - Pressure Gauge (bottom connection)	1

* 15", 17", 20" & 24" REQUIRE 6 PIECES / 30" REQUIRES 8 PIECES

** SEE VALVE SHEET FOR VALVE SPARE PARTS

REMARK : For 30" Cristal-Flo™ filter with Serialnumber smaller then E111600000 (before August 2011)

When a lateral is broken, the complete standpipe and all laterals need to be replaced

Please review partnumbers mentioned under reference 2 and 3 of above overview