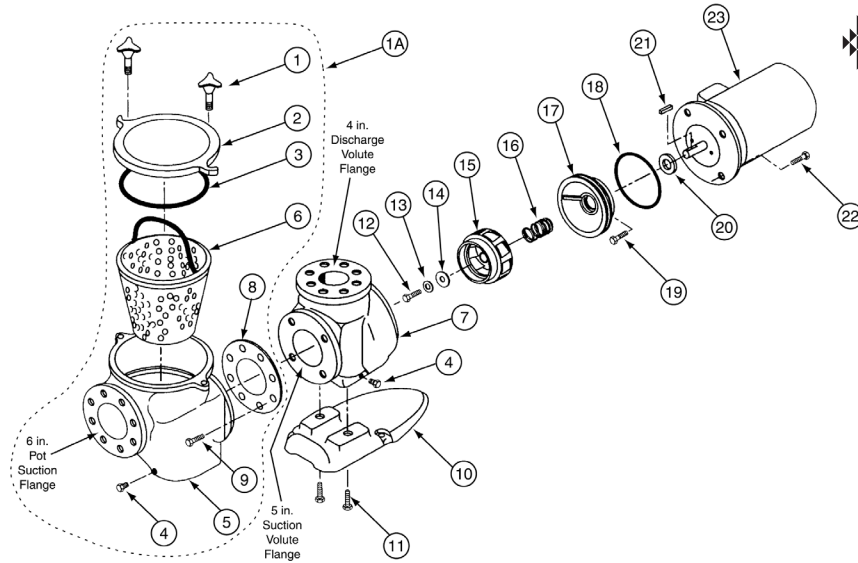


C SERIES® HIGH PERFORMANCE COMMERCIAL PUMP

REPLACEMENT PARTS



Item	Part No.	Ref. No.	Description	US List	Can. List
C SERIES PUMPS					
1	075280	54475280618	Hand nut assembly, bronze, 2 req.	129.77	133.66
1A	072747		C series pot assembly ¹	5,885.71	6,062.28
2	075275	26075275219	Cover, C16, bronze	941.22	969.46
3	071433	3640525457	O-ring, C-18	8.90	9.17
4	071551	6000002190	Plug pipe, 1/4 in. bronze, 1 req.	5.28	5.44
5	075271Z	79675271199	Pot mach. bronze	4,458.94	4,592.71
6	072795	70472795100	Basket, C-29 SS 11 in.	442.82	456.10
7	075273Z	18075273199	Volute, C-2 bronze	4,398.76	4,530.72
8	070943	36470943603	Gasket flange, P-135, 5 in.	27.28	28.10
9	071683	1680634104	Screw, 3/4, 10 x 1-3/4 hh. brs. P-12, 4 req.	34.06	35.08
10	075287	82075287632	Foot, C-4 coated	98.02	100.96
11	071688	1680558359	Screw, 5/8, 11 x 1 stl. hh., 2 req.	1.80	1.85
12	071037	1680115104	Impeller, C-35 lock screw	6.05	6.23
13	071048	90871048212	Impeller, washer, C-71	13.69	14.10
14	075713	3642034603	Impeller, washer gasket	1.42	1.46
15	073828	44473328208	Impeller, CH-50/CHK-50/CHKL-50, 5HP, 1PH, 3PH, high hd.	1,452.55	1,496.13
15	070228	44470228208	Impeller, CM-50/CMK-50/CMKL-50, 5HP, 1PH, 3PH, med. hd.	1,452.55	1,496.13
15	073829	44473829208	Impeller, CH-75/CHK-75/CHKL-75, 7.5HP, 1PH, 3PH, high hd.	1,452.55	1,496.13
15	070227	44470227208	Impeller, CM-75/CMK-75/CMKL-75, 7.5HP, 1PH, 3PH, med. hd.	1,452.55	1,496.13
15	073830	44473830208	Impeller, CH-100/CHK-100/CHKL-100, 10HP, 1PH, 3PH, high hd.	1,452.55	1,496.13

Item	Part No.	Ref. No.	Description	US List	Can. List
15	070226	44470226208	Impeller, CM-100/CMK-100/CMKL-100, 10HP, 1PH, 3PH, med hd.	1,452.55	1,496.13
15	073831	44473831208	Impeller, CHK-150/CHKL-150, 15HP, 3PH, high hd.	1,452.55	1,496.13
15	070225	44470225208	Impeller, CMK-150/CMKL-150, 15HP, 3PH, med hd.	1,452.55	1,496.13
15	073832	44473832208	Impeller, CHK-200/CHKL-200, 20HP, 3PH, high hd.	1,452.55	1,496.13
16	071725S	71271725753	Seal, C-7, PS-360	46.63	48.03
17	070906	11670906199	Flange, mach., C-52 brass	632.63	651.61
18	071423	3640508457	O-ring, C-70	3.52	3.63
19	071681	1680378104	Screw, 3/8, 16 x 7/8 in. CS hh., 2 req.	1.33	1.37
20	072185	7641043478	Water slinger, C-115	9.39	9.67
21	071046	4720201104	Impeller, key, 3/16 in.	23.79	24.50
22	071687	1680155113	Screw, 1/2, 13 x 1-1/4 stl. hh., 4 req.	5.90	6.08
60 HERTZ MOTORS					
23	357205S		Motor package, 5HP, 1PH, 200/208V	3,472.22	3,576.39
23	071366S	52571366999	Motor package, 5HP, 1PH, 230V	3,472.22	3,576.39
23	357206S		Motor package, 5HP, 3PH, 200/208V	2,788.70	2,872.36
23	071364S	52571364999	Motor package, 5HP, 3PH, 208-220/440	2,788.72	2,872.38
23	357207S		Motor package, 7-1/2 HP, 1PH, 200/208V	3,787.37	3,900.99
23	357204S	525357204999	Motor package, 7-1/2 HP, 1PH, 230V	3,787.37	3,900.99
23	357208S		Motor package, 7-1/2 HP, 3PH, 200/208V	3,053.66	3,145.27
23	071365S	52571365999	Motor package, 7-1/2 HP, 3PH, 208-220/440V	3,053.65	3,145.26

C SERIES® HIGH PERFORMANCE PUMP (CONT'D)

REPLACEMENT PARTS

Item	Part No.	Ref. No.	Description	US List	Can. List
C SERIES PUMPS					
60 HERTZ MOTORS (Cont'd)					
23	357247S		Motor package, 7.5HP, 3PH, 575V	3,053.66	3,145.27
23	357209S		Motor package, 10HP, 3PH, 200/208V	4,392.39	4,524.16
23	357249S		Motor package, 10HP, 1PH, 230V	3,875.78	3,992.05
23	071363S	52571363999	Motor package, 10HP, 3PH, 208-220/440V	4,392.39	4,524.16
23	357238S		Motor package, 10HP, 3PH, 575V	4,392.39	4,524.16
23	357210S		Motor package 15HP, 3PH, 200/208V	5,145.60	5,299.97
23	071361S	52571361999	Motor package, 15HP, 3PH, 208-220/440V	5,145.60	5,299.97
23	357245S		Motor package, 15HP, 3PH, 575V	5,145.60	5,299.97
23	357211S		Motor package, 20HP, 3PH, 200/208V	8,461.77	8,715.62
23	071362S	52571362999	Motor package, 20HP, 3PH, 208-220/440V	8,461.77	8,715.62
23	357246S		Motor package 20HP, 3PH, 575V	8,461.77	8,715.62
50 HERTZ MOTORS					
23	072737S	52572737999	Motor, 5HP, 3PH, 380/415V	2,788.70	2,872.36
23	072739S	52572739999	Motor, 7.5HP, 3PH, 380/415V	3,053.66	3,145.27
23	072740S	52572740999	Motor, 10HP, 3PH, 380/415V	1,730.22	1,782.13
23	072742S	52572742999	Motor, 15HP, 3PH, 380/415V	4,900.59	5,047.61
23	072744S	52572744999	Motor, 20HP, 3PH, 380/415V	8,461.77	8,715.62
Motor subassemblies include items No.12 -21 and 23					
	073260	A073260	Motor, sub assembly, CM-50	5,727.23	5,899.05
	073262	A073262	Motor, sub assembly, CMK-50 ²	6,432.72	6,625.70
	073264	A073264	Motor, sub assembly, CH-50	6,856.88	7,062.59
	073265	A073265	Motor, sub assembly, CHK-50 ²	6,597.66	6,795.59
	073263	A073263	Motor, sub assembly CMK-75 ²	6,603.88	6,802.00
	073266	A073266	Motor, sub assembly CHK-75 ²	6,773.45	6,976.65
	073680	A073680	Motor, sub assembly CMK-100 ²	8,713.40	8,974.80
	073267		Motor, sub assembly CHK-100 ²	7,187.37	7,402.99

Item	Part No.	Ref. No.	Description	US List	Can. List
	073261	A073261	Motor, sub assembly CMK-150 ²	8,941.43	9,209.67
	073268	A073268	Motor, sub assembly CHK-150 ²	9,341.88	9,622.14
	073269	A073269	Motor, sub assembly CHK-200 ²	13,333.50	13,733.51
	357910	A357910	Motor, sub assembly CH-75, 1PH, 230V ³	5,909.35	6,086.63
	357930	A357930	Motor, sub assembly CM-75, 1PH, 200V ³	5,909.35	6,086.63
	357935	A357935	Motor, sub assembly CH-75, 1PH, 200V ³	5,909.35	6,086.63
	357250		Motor, sub assembly CH-100, 10HP, 1PH, 230V	8,595.39	8,853.25
	357251		Motor, sub assembly CM-100, 1PH, 230V	8,595.39	8,853.25
	014700	A014700	Motor, sub assembly CMKL-50 380/415V ⁴	6,371.49	6,562.63
	014801	A014801	Motor, sub assembly CHKL-50 380/415V ⁴	6,371.49	6,562.63
	014701	A014701	Motor, sub assembly CMKL-75 380/415V ⁴	6,541.01	6,737.24
	014802	A014802	Motor, sub assembly CHKL-75 380/415V ⁴	6,541.01	6,737.24
	014702	A014702	Motor, sub assembly CMKL-100 ⁴	8,398.74	8,650.70
	014803	A014803	Motor, sub assembly CHKL-100 ⁴	8,398.74	8,650.70
	014703	A014703	Motor, sub assembly CMKL-150 ⁴	9,252.88	9,530.47
	014804	A014804	Motor, sub assembly CHKL-150 ⁴	9,252.88	9,530.47
	014805	A014805	Motor, sub assembly CHKL-200 ⁴	13,206.55	13,602.75

¹ Includes: 2 of item No. 1, 1 each of items No. 2 thru No. 6, 1 of item No. 8 and 4 of item No. 9.

² All motor subassemblies are 60 Hertz 220/440V, 3 phase.

³ All motor subassemblies are single phase 60 Hertz.

⁴ All motor subassemblies are 50 Hertz 380/415V, 3 phase.

Notes:

- All bronze C-series parts will retrofit older cast iron models.
- Standard flange not included with pump.
- For all 200/208V applications, use 200/208V motors only.